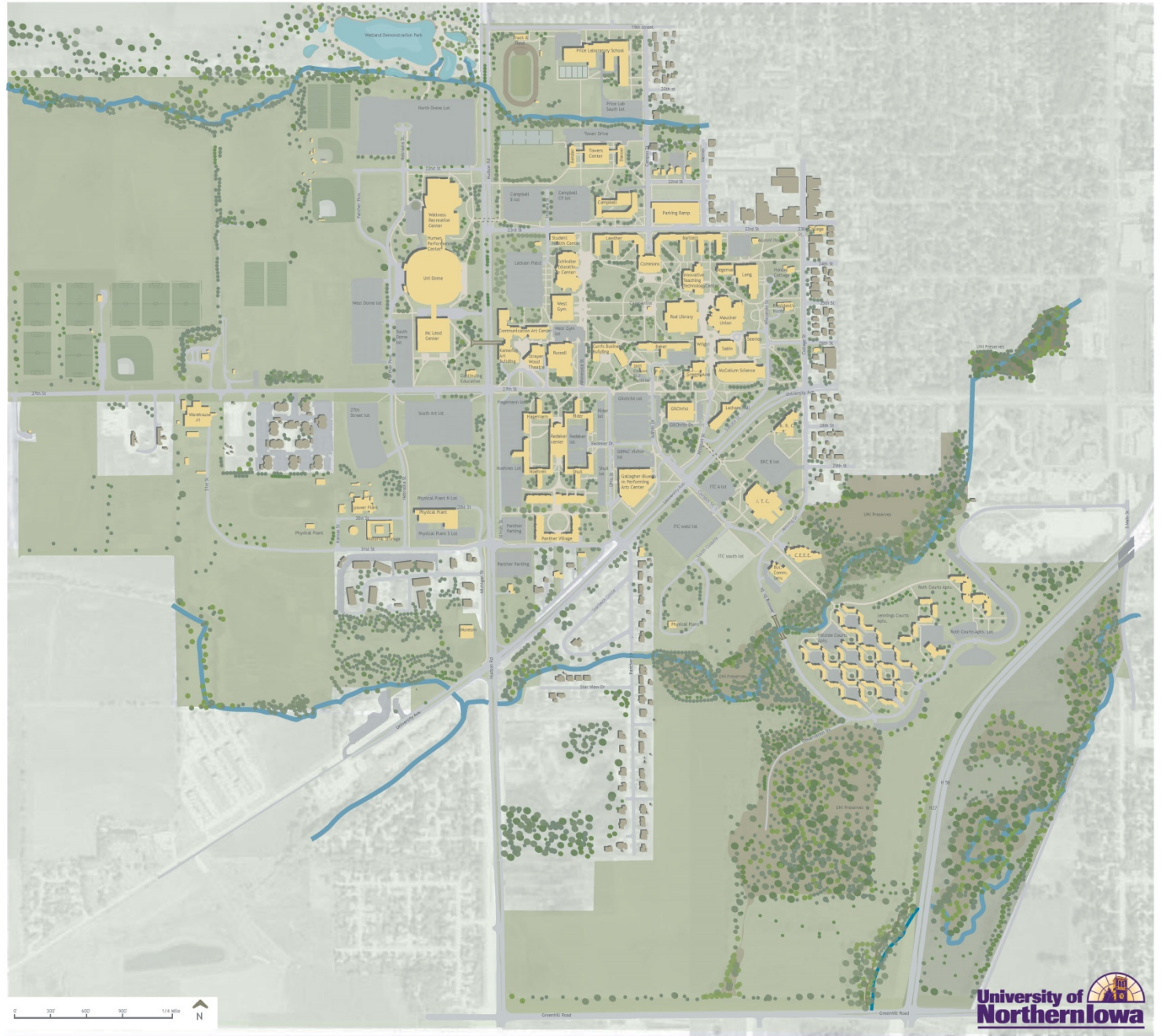




UNI CAMPUS 2013



UNI CAMPUS PLAN





UNI MASTER PLAN

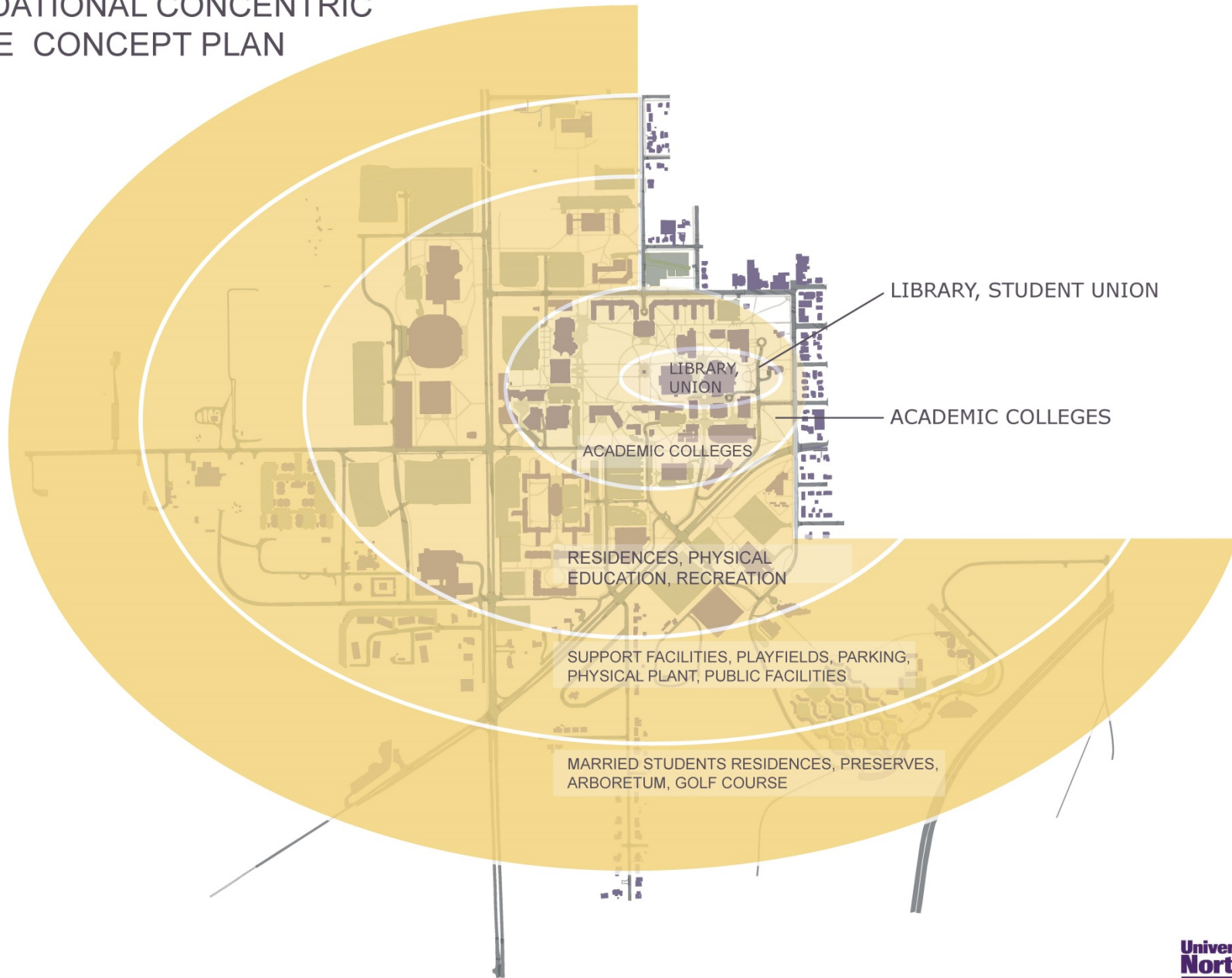
- 1968 Campus Master Plan, Caudill Rowlett Scott, Houston, Texas
- 1984 - UNI Select Committee on University Planning
- 1995 - Campus Master Plan Report
- 2000 - Campus Master Plan Update
- 2001 - West Campus Master Plan
- 2003 - South University Public Campus Concept Plan
- 2004 - Campus Master Plan Update
- 2009 - Campus Master Plan Update
- 2011 - Campus Master Plan Update
- 2011 - West Campus - Master Plan Update



UNI CONCEPTS PLAN

- Concentric Zones of Land Use
- Compact, unified, pedestrian orientated campus
- Basis of circulation, patterns, placement of buildings, parking, and open space land use
- Concept still valid at campus population levels projected in the current strategic plan
- Reviewed and updated by the Facilities Planning Advisory Committee

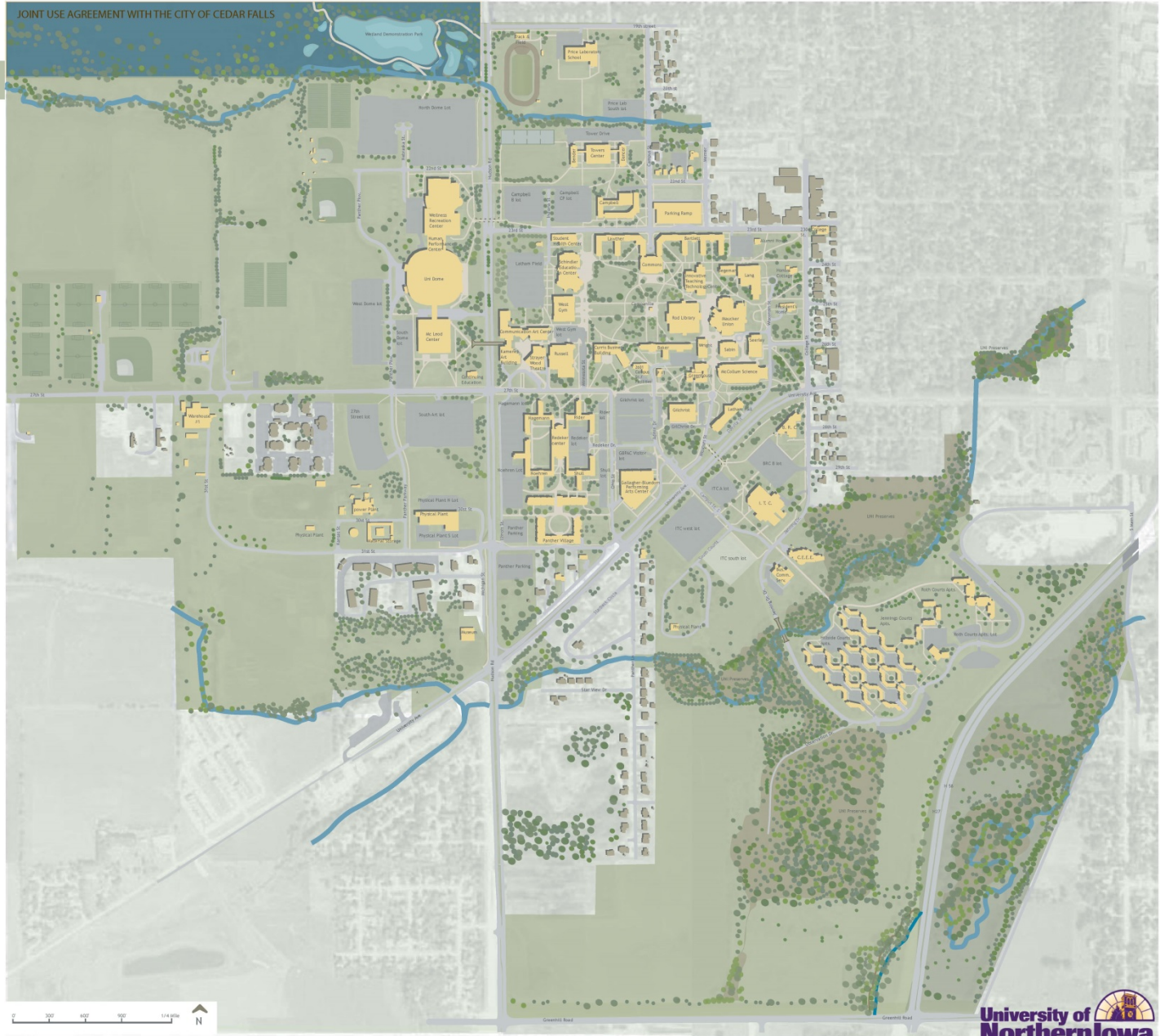
FOUNDATIONAL CONCENTRIC CIRCLE CONCEPT PLAN



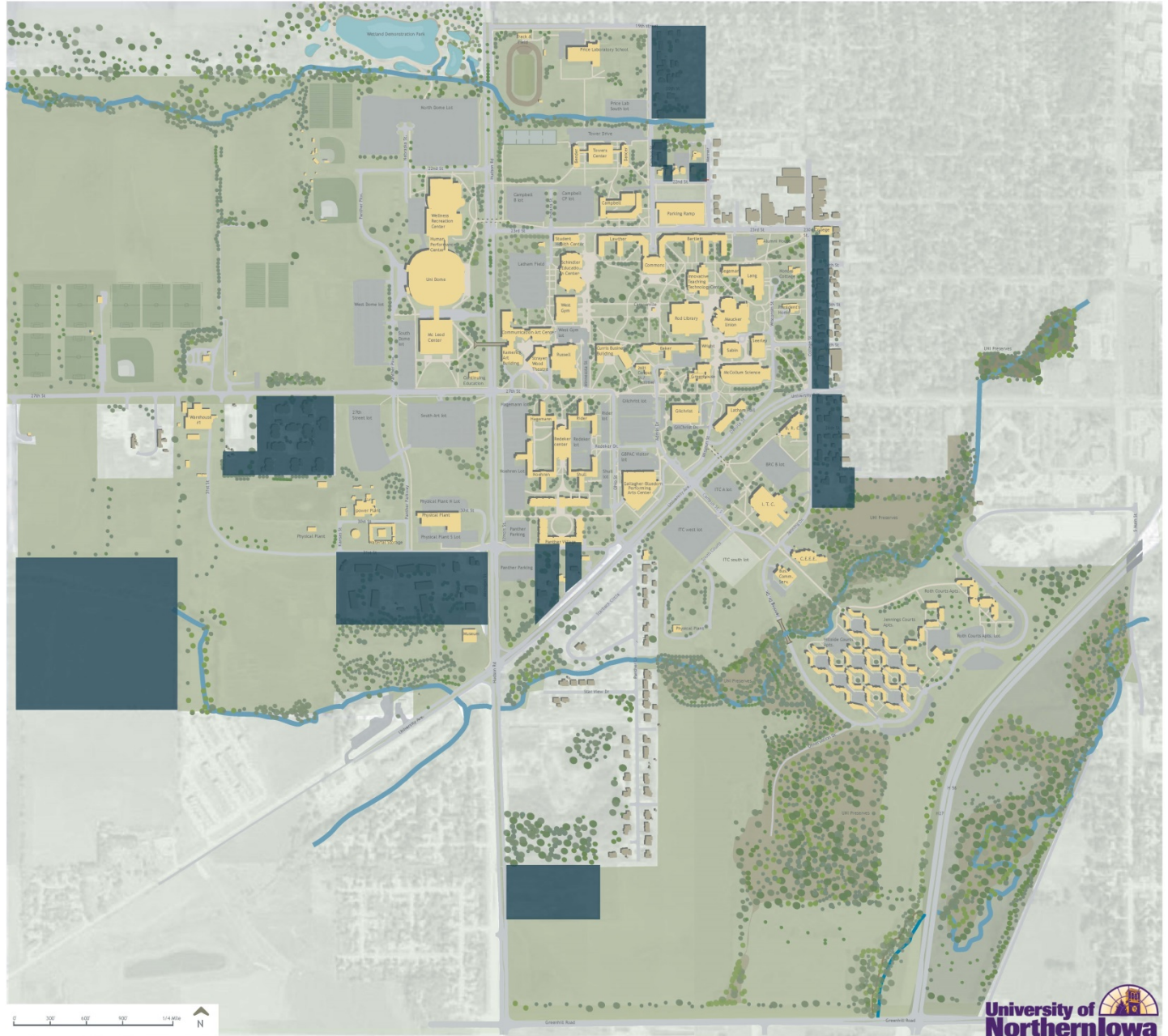
UNI PROPERTY LIMITS

936 ACRES

- UNI CAMPUS
- JOINT USE AGREEMENT BETWEEN UNI & CEDAR FALLS
- PRIVATE PROPERTY



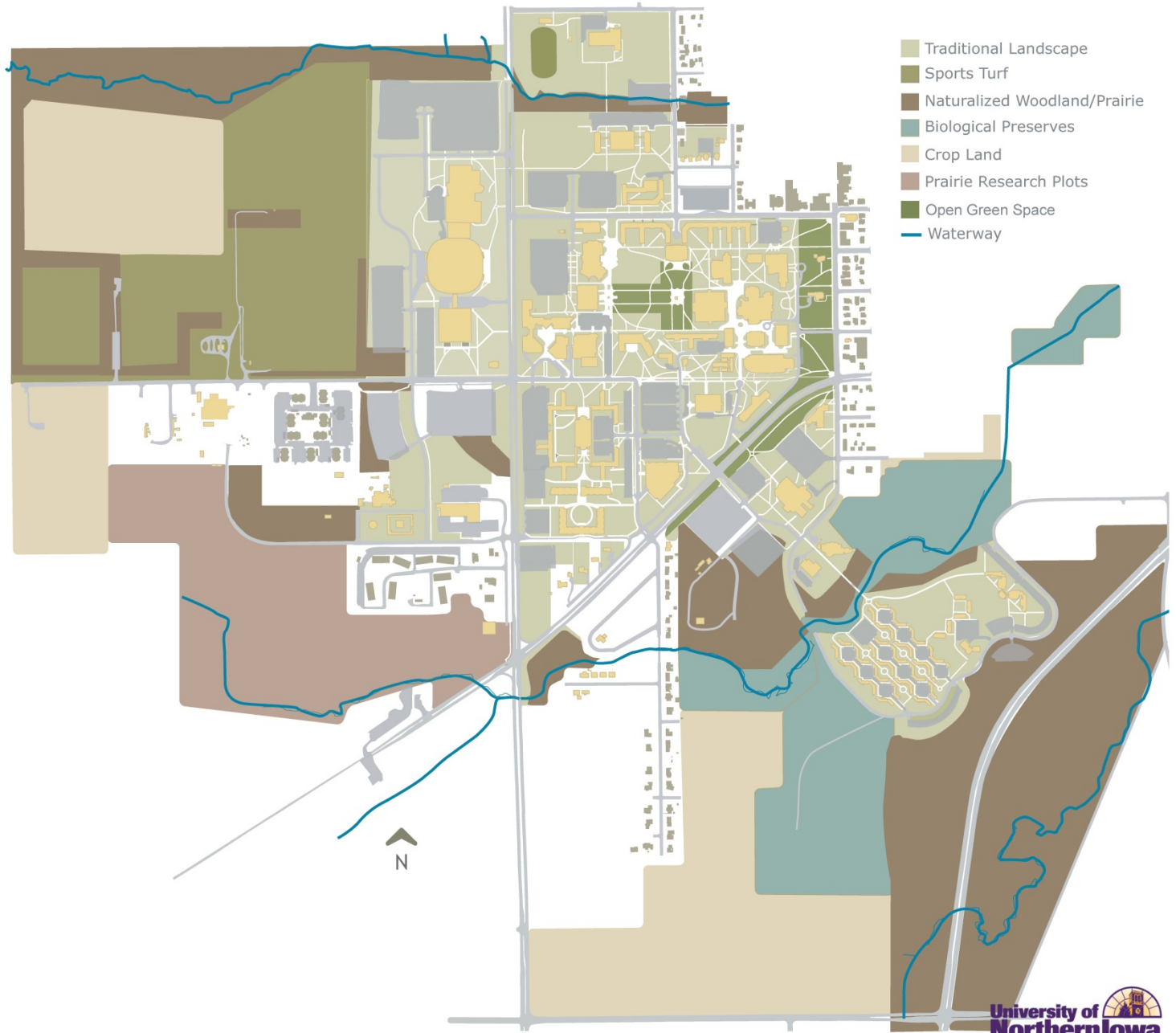
LAND OF INTEREST TO THE UNIVERSITY



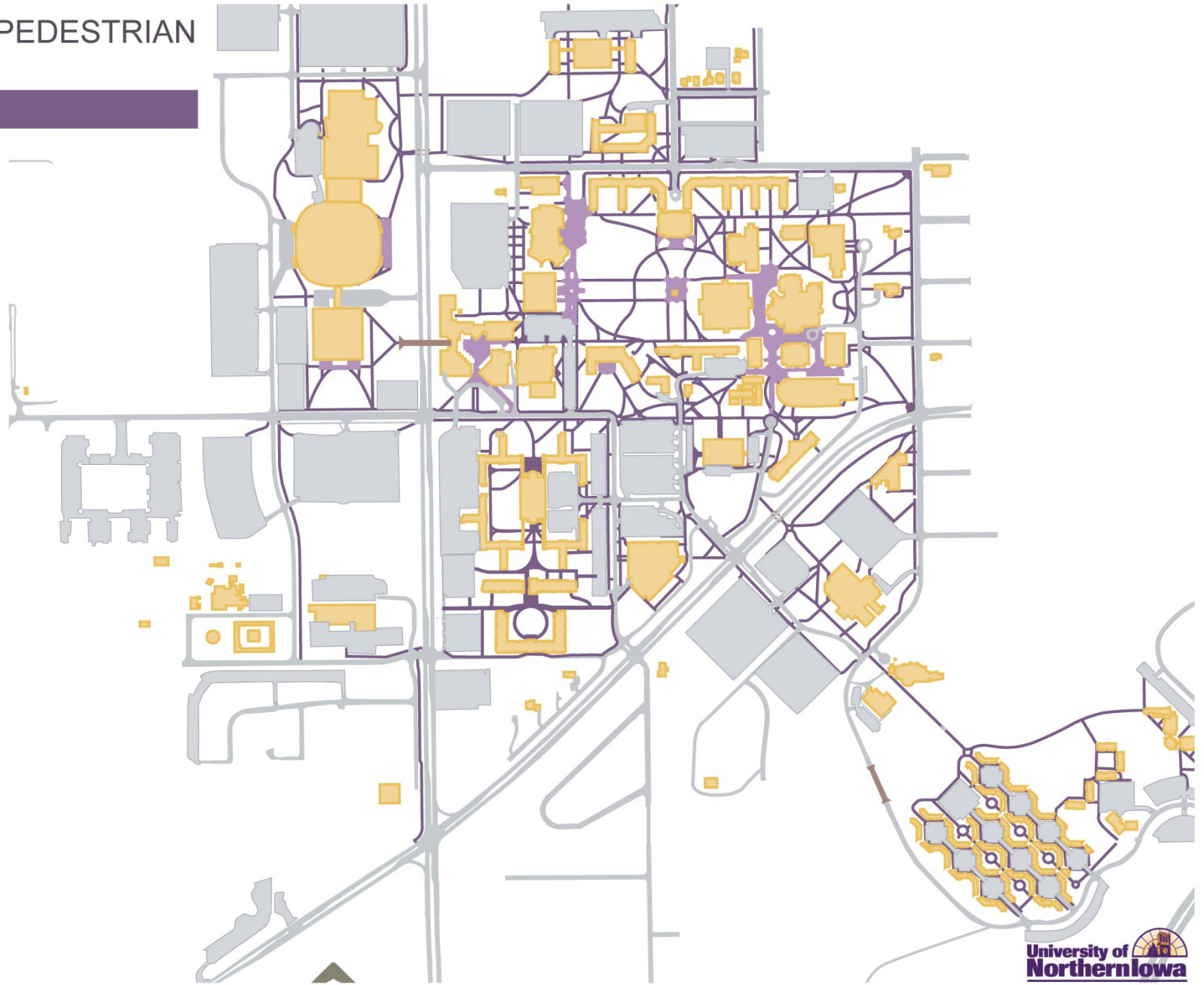
POTENTIAL FUTURE BUILDING SITES



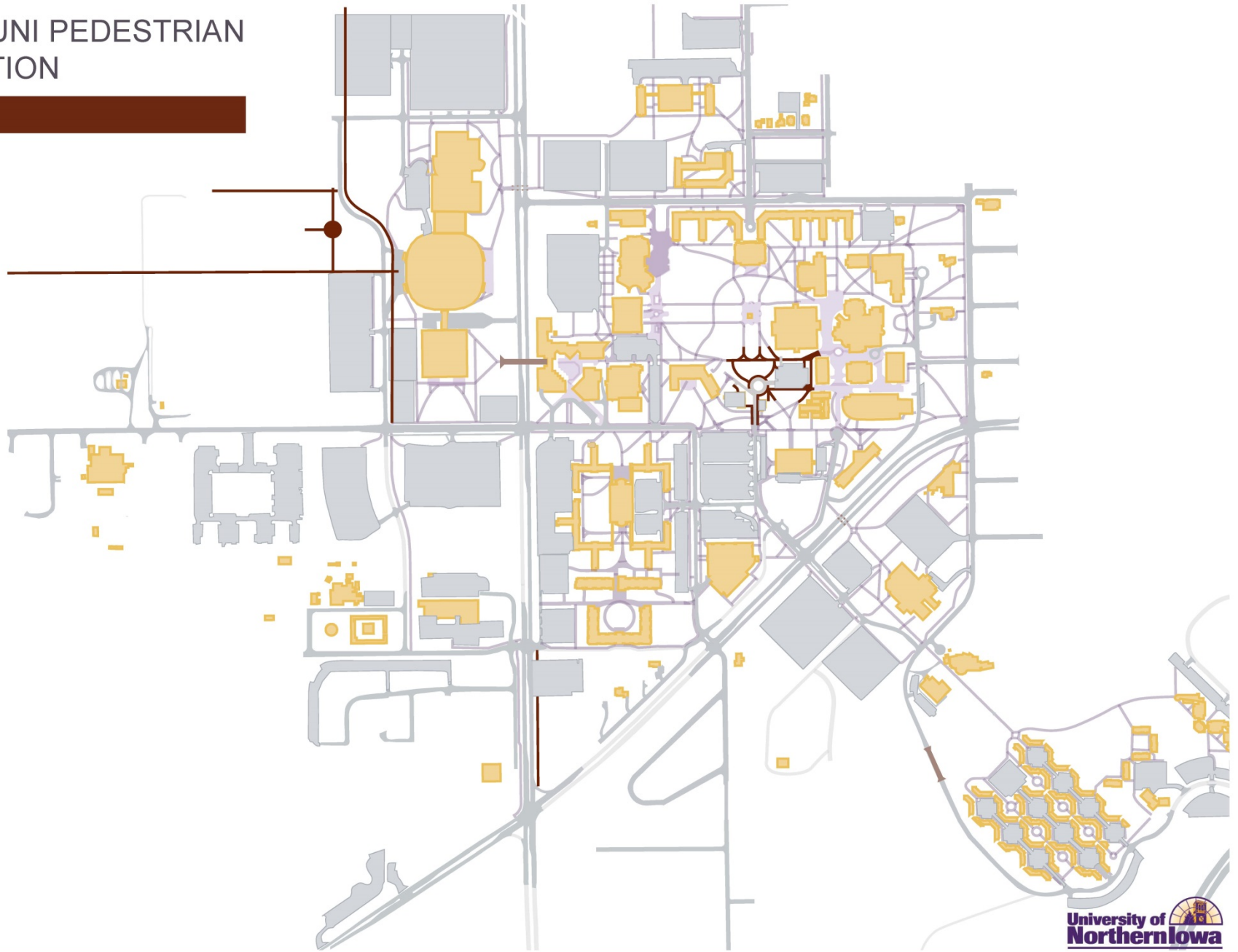
UNI LAND USE



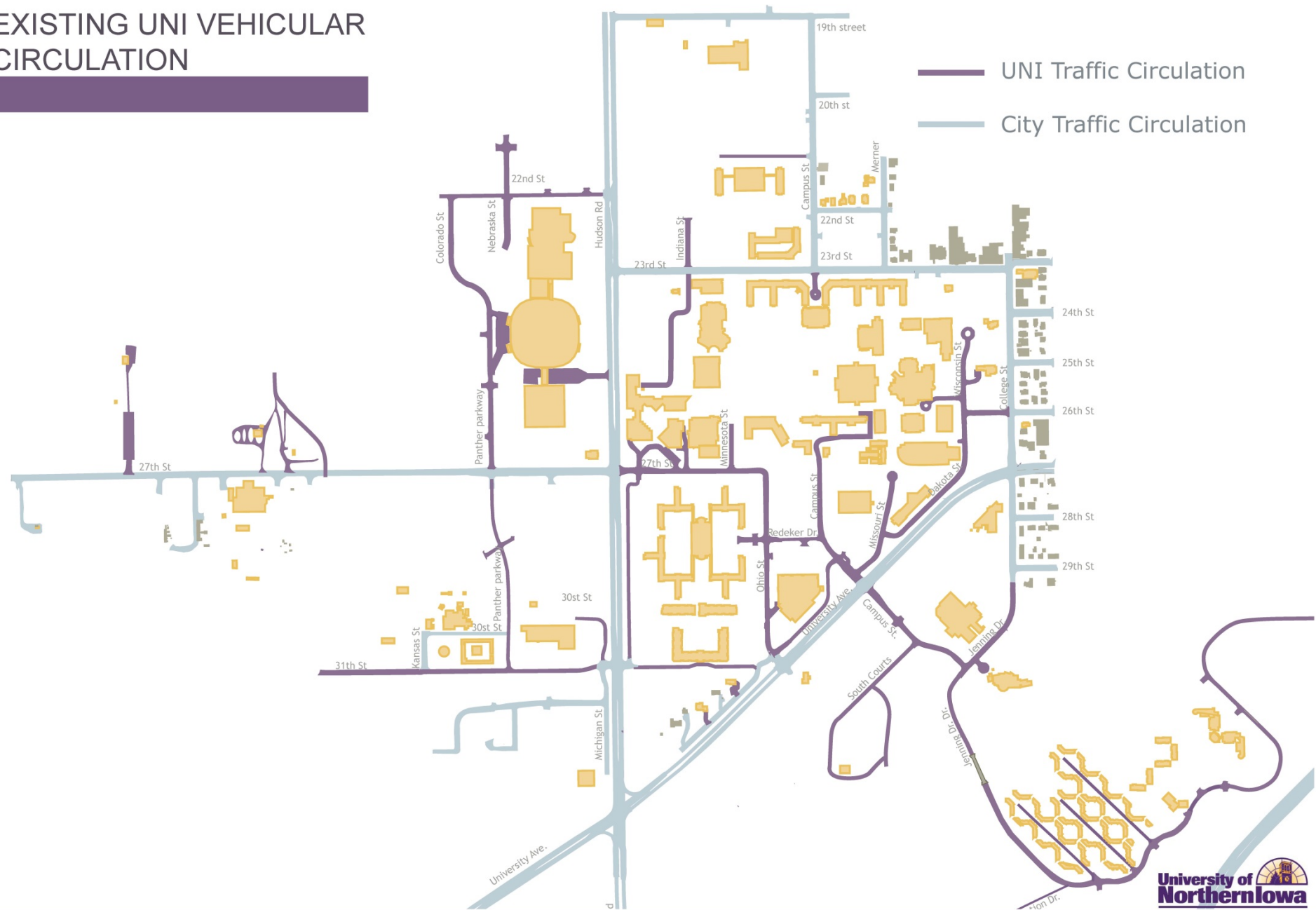
EXISTING UNI PEDESTRIAN CIRCULATION



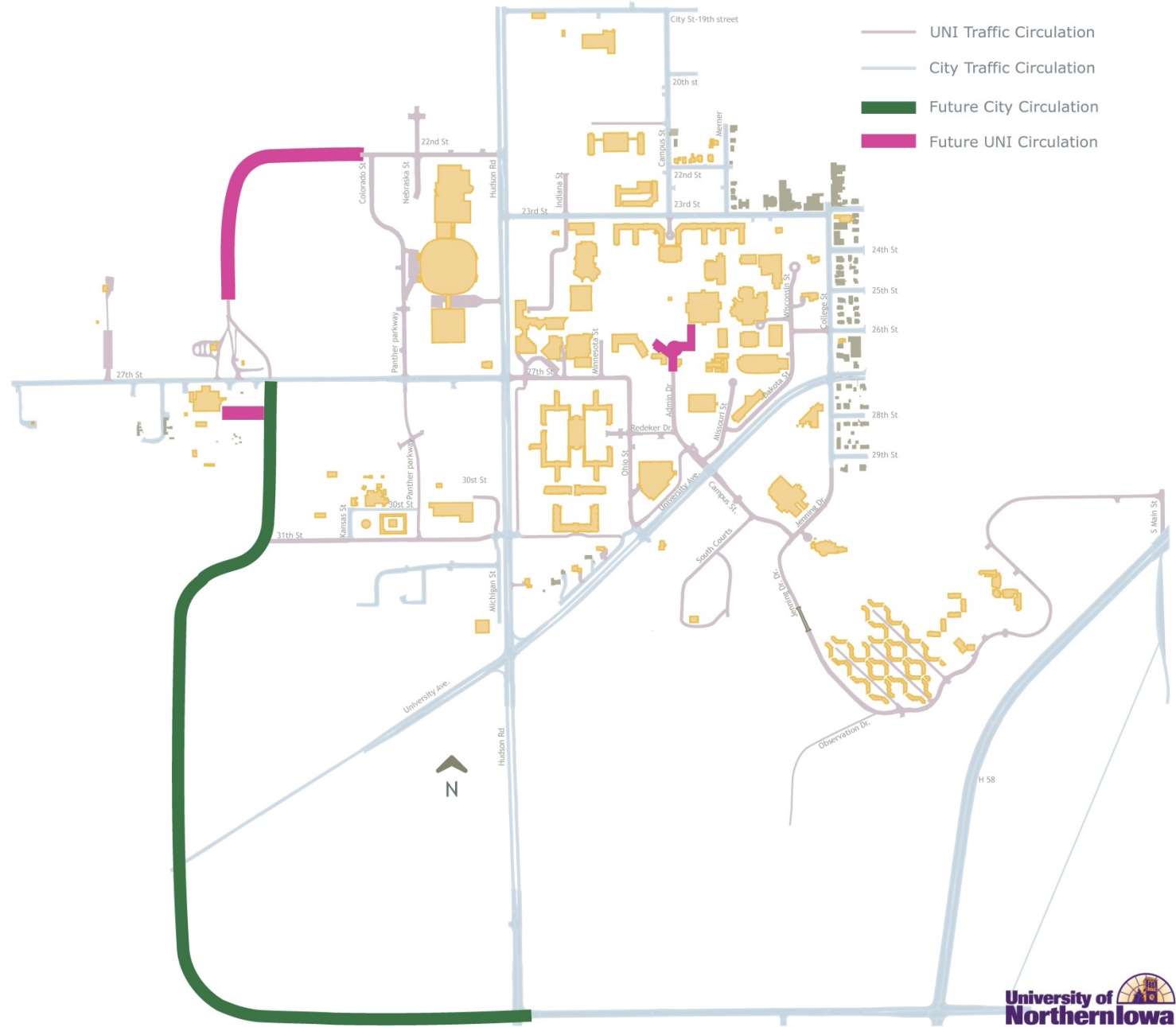
FUTURE UNI PEDESTRIAN CIRCULATION



EXISTING UNI VEHICULAR CIRCULATION



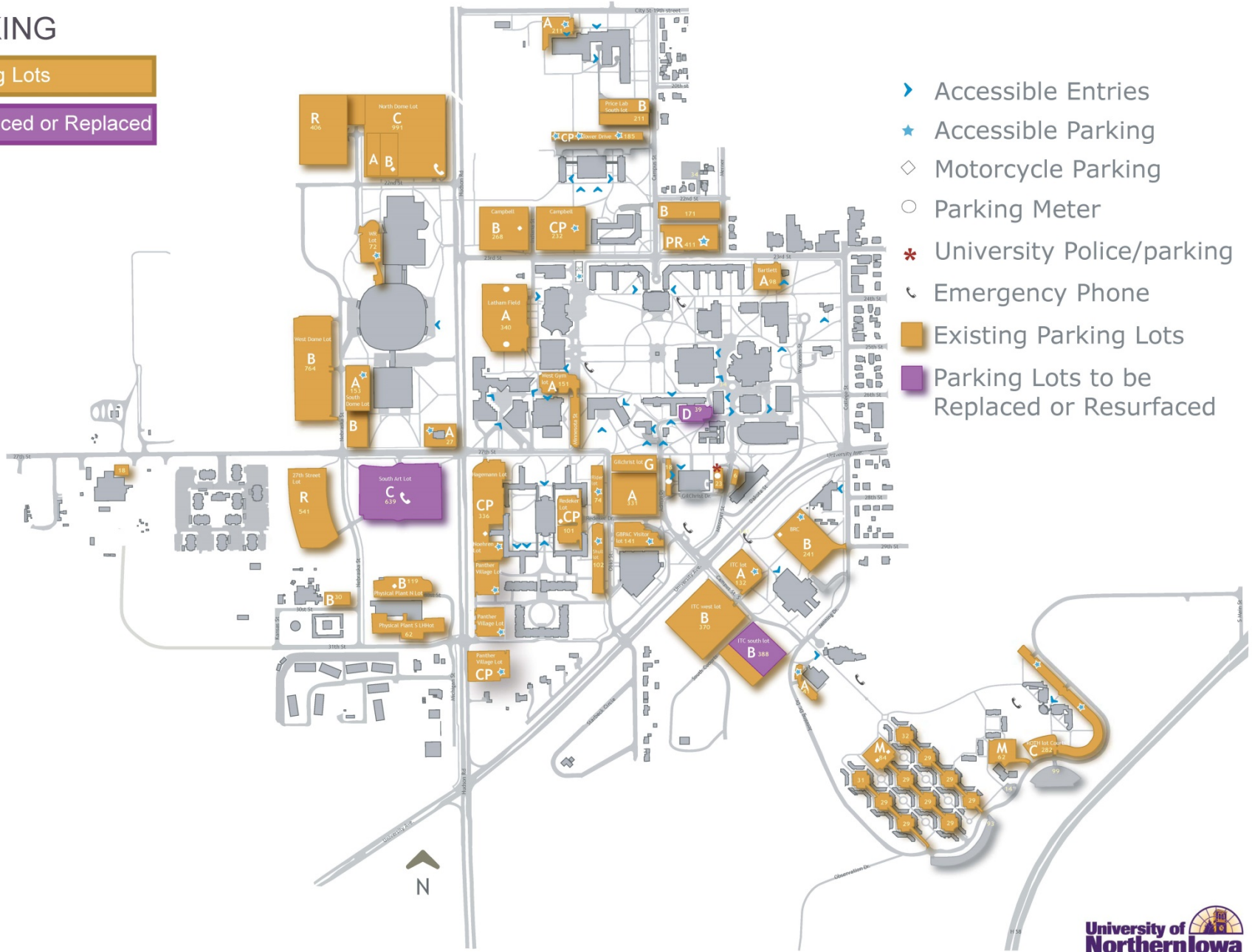
FUTURE UNI VEHICULAR CIRCULATION



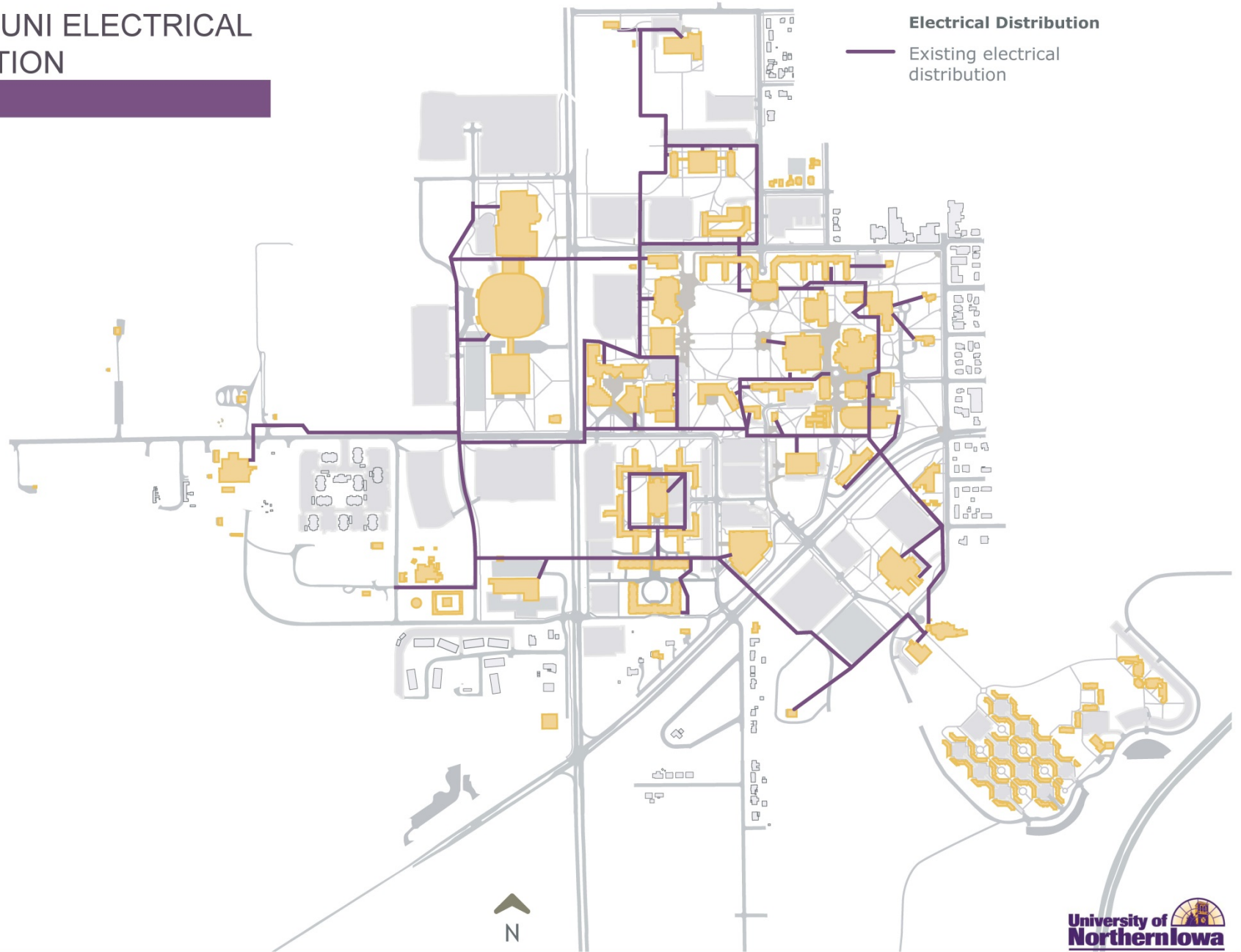
UNI PARKING

Existing Parking Lots

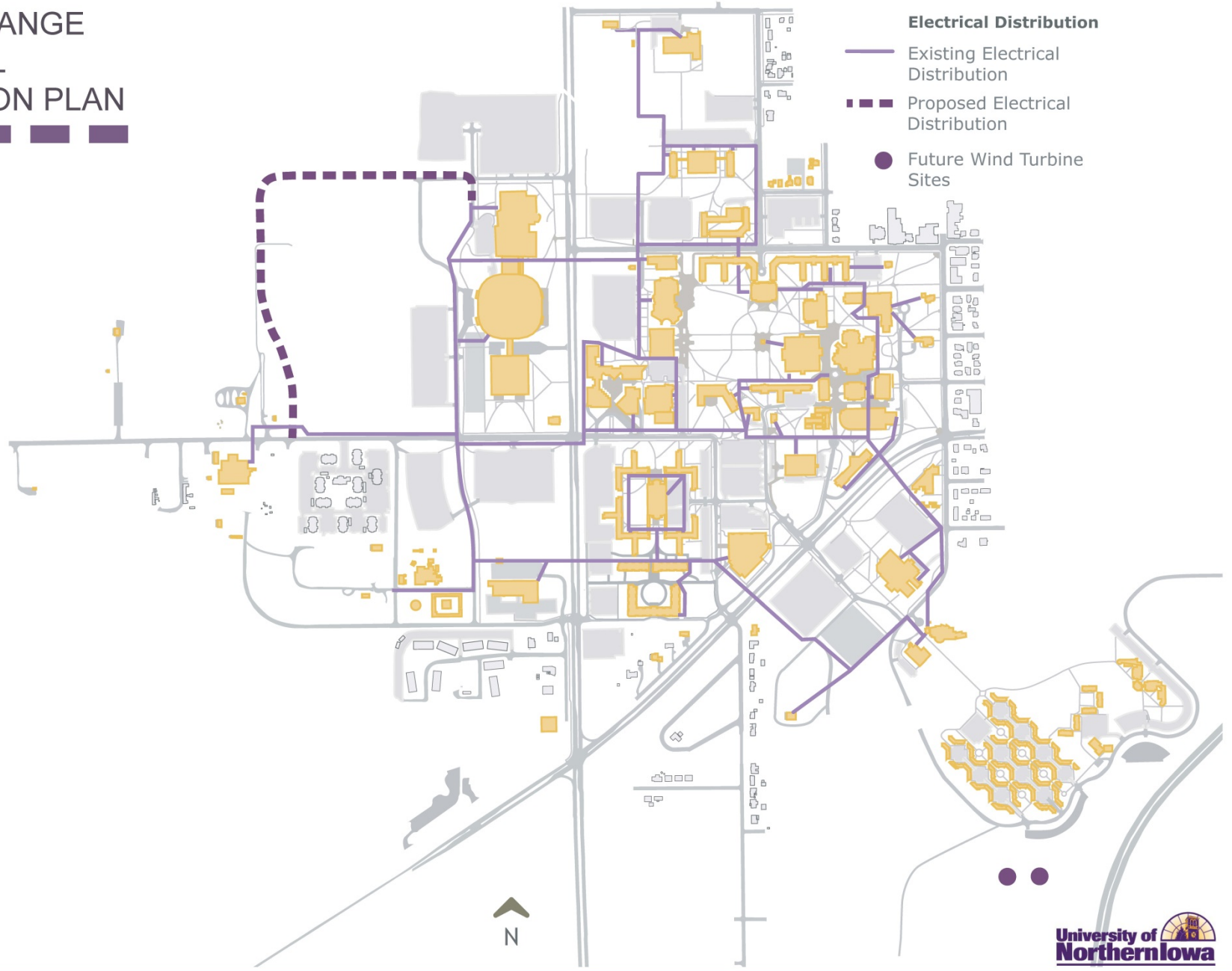
Future: Resurfaced or Replaced



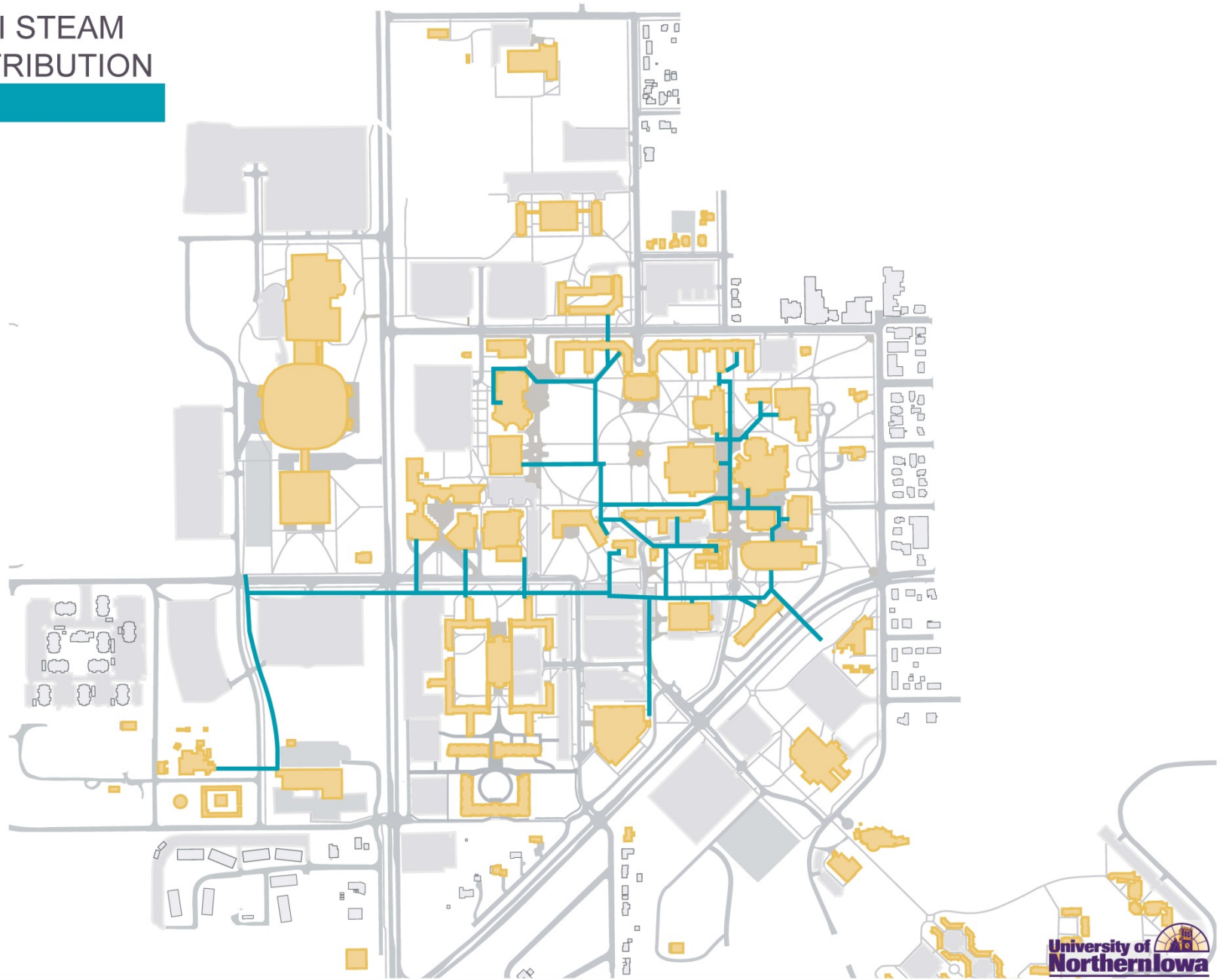
EXISTING UNI ELECTRICAL DISTRIBUTION



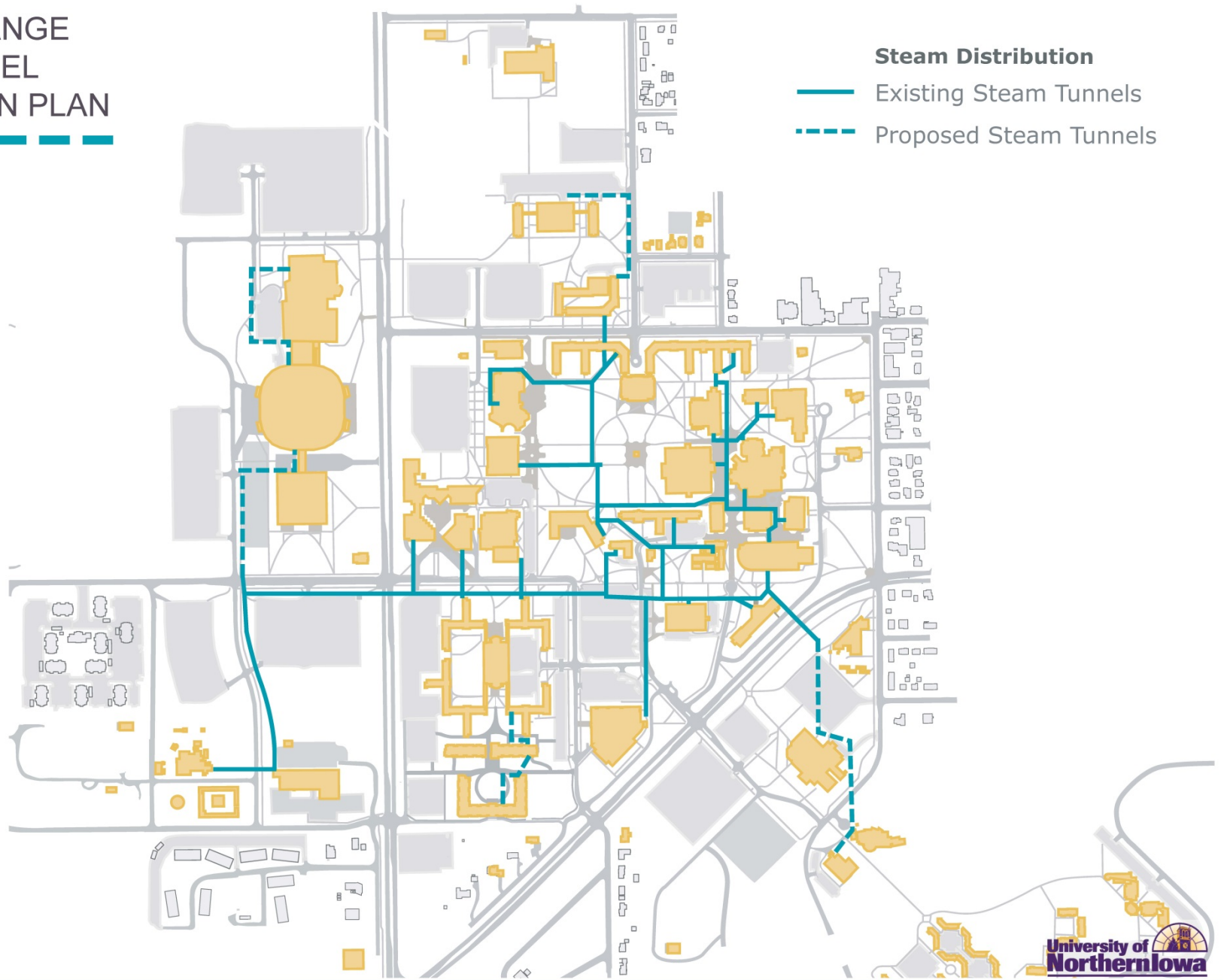
UNI LONG RANGE ELECTRICAL DISTRIBUTION PLAN



EXISTING UNI STEAM TUNNEL DISTRIBUTION



UNI LONG RANGE STEAM TUNNEL DISTRIBUTION PLAN



UNI RENOVATION SCHEDULE

Renovated Since 1990

Future Renovation Projects

